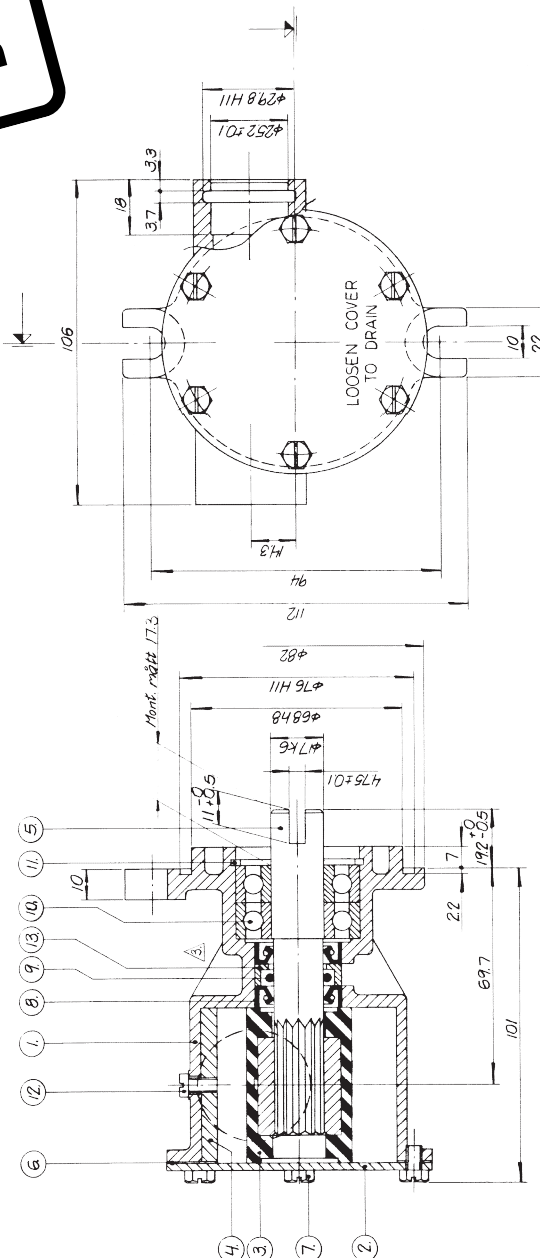


10-24277

pump F7B-9

**Customer Branded**



F7B-9 Impeller pump  
Art. No. 10-24277-1

Service Kit No. 09-45868

Part no.	Description GB	Position	Quantity
01-24082	BODY F7B-9	1	1
01-45598	ENDCOVER F7B-9	2	1
08-10288	IMPELLER	3	1
01-42679	CAM 1/1 F7B/F70B	4	1
01-45844	SHAFT F7B-9	5	1
01-42445	GASKET F4B/F7B-	6	1
0.0141.502	SCREW M5X8 DIN933SLOTTED BRASS	7	6
0.2233.001	LIP SEAL 16X28X7 DPSM	8	2
0.2173.402	O-RING 15.3X2.4 SS1586 NBR70	9	1
0.3431.483	BALL BEARING 6203	10	2
0.0371.040	RETAIN. RING BORE D40 DIN472 SPRST	11	1
01-46794-07	SCREW 12-24UNCX8 BRASS	12	1
01-45181	WASHER F5/F7B-9	13	1

Pump No. pump nr.	Pump type Pumptyp	Gasket Packing	Cam No.	Cam Thickness	Screw SKRUV	Endcover Lock	Mark on endcover Markes på lock
10-24277-1	F7B-9		01-42679	1/1	6.2	01-45598	68459 + weekly code
10-24277-2	F7B-9-02	01-42445	01-42679	1/2	6.2		68470 + weekly code
10-24277-3	F7B-9		01-42679	1/1	6.2	01-42441	F7B-9-02 + weekly code
10-24277-4	F7B-9-02		01-42679	1/2	6.2	01-45598	F7B-9-02 + weekly code
10-24277-5	F7B-9		01-42679	1/1	6.2		68459 + weekly code

10-24277-5  
Manufacturing requirement: 97-24394  
Tillverkningsbeställning:

VP nr	VP nr	VP nr	VP nr	VP nr	VP nr	VP nr	VP nr	VP nr	VP nr
971125	AN	971125	AN	971125	AN	971125	AN	971125	AN
950627	AS	950627	AS	950627	AS	950627	AS	950627	AS
971116	TE	971116	TE	971116	TE	971116	TE	971116	TE
960211	TE	960211	TE	960211	TE	960211	TE	960211	TE
960213	TE	960213	TE	960213	TE	960213	TE	960213	TE
851008	U	851008	U	851008	U	851008	U	851008	U
850809	U	850809	U	850809	U	850809	U	850809	U

This drawing is the property of Johnson Pump AB. It is not to be reproduced, stored in a retrieval system, or transmitted in any form or by any means, electronic, mechanical, photocopying, recording, or by any information storage and retrieval system, without the prior written permission of Johnson Pump AB.

Scale 1:1

Johnson Pump AB  
ORNSÄLWEN  
SE-101 18 10 30

Johnson Impellerpump  
Type F7B-9, 10-24277

Scale 1:1

Date 10-24277-08